

DYNON CERTIFIED



**AFFORDABLE AVIONICS
FOR CERTIFIED AIRCRAFT**

DYNONCERTIFIED.COM

DYNON CERTIFIED

For years, pilots of certified aircraft have been forced to choose between maintaining their dated, legacy instrumentation or updating their panel with expensive, piecemeal avionics upgrades.

THAT CHANGES NOW!

Dynon Certified systems are the first complete, integrated avionics packages designed for installation into a wide variety of GA aircraft. In fact, Dynon panels are already flying in over 25,000 aircraft across hundreds of types. With roots in light sport and experimental aircraft, Dynon products are designed to install quickly and efficiently, minimizing the cost of modernizing your panel.

SKYVIEW HDX FEATURES AND BENEFITS

Dynon Certified panels feature SkyView HDX, Dynon's flagship integrated avionics platform that replaces your legacy equipment with a modern, affordable system.

- HD Clear, Vibrant Displays:** SkyView HDX features bright, high-resolution HD displays with wide viewing angles for the sharpest picture ever from Dynon.
- Beautiful Design:** SkyView HDX's modern, elegant design features robust metal and glass construction that is worthy of your aircraft.
- Unrivaled Control Ergonomics:** SkyView HDX combines full physical controls with a touchscreen, allowing unrivaled control and performance in all flight conditions - especially turbulence.
- Touch Interface:** SkyView HDX features icon-driven touch controls and simplified screen navigation for reduced workload. An expansive glass display features edge-to-edge touchability with no bezel in the way.
- Capable and Compatible:** SkyView HDX uses Dynon's remote SkyView Network modules and components to allow clean, elegant panel layouts. SkyView HDX features seamless compatibility with today's best IFR navigators like the Avidyne IFD series.



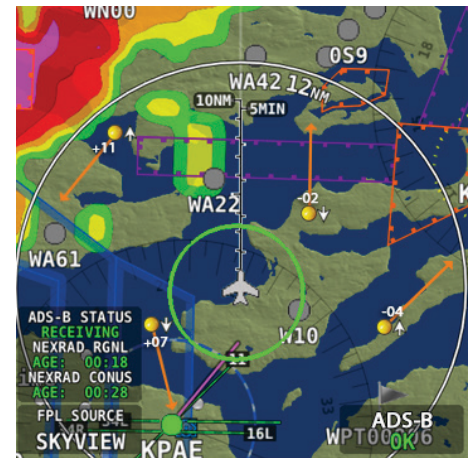
Primary Flight Display

All of your flight instruments - fully capable of IFR - plus angle of attack, synthetic vision, and much more.



Engine Monitoring

All the tools you need - including % power - to effectively manage your powerplant whether you're a rich or lean of peak fan.



Traffic and Weather

Gain superior situational awareness with full ADS-B In Traffic and Weather.



Autopilot

Full-featured autopilot with advanced features like Flight Director, VNAV, altitude pre-select, and coupled approaches (when connected to an IFR navigator).



Mode S Transponder with 2020-compliant ADS-B Out

No need to install a separate 2020-compliant ADS-B Out solution - SkyView HDX has you covered.



Flight Planning, Navigation, & Mapping

Full-featured and intuitive flight planning and mapping, including optional charts, airport diagrams, and procedures.

SKYVIEW HDX SYSTEM AND OPTIONS

Every Dynon Certified SkyView HDX system starts with two sets of independent and redundant flight instruments that are IFR capable. Every HDX display also includes a full moving map with robust VFR GPS flight planning and navigation capabilities. With packages starting at around \$11,400 and nearly 600 piston single aircraft approved, there is a Dynon Certified panel available for everyone.

Core System: Dual Redundant Flight Instruments, Moving Map, VFR GPS Navigator



SkyView HDX is the flagship avionics system from Dynon. Trusted in thousands of light aircraft, it is now certified for installation in nearly 600 aircraft models.

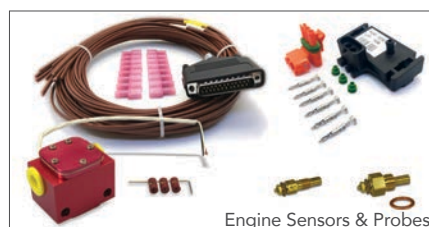
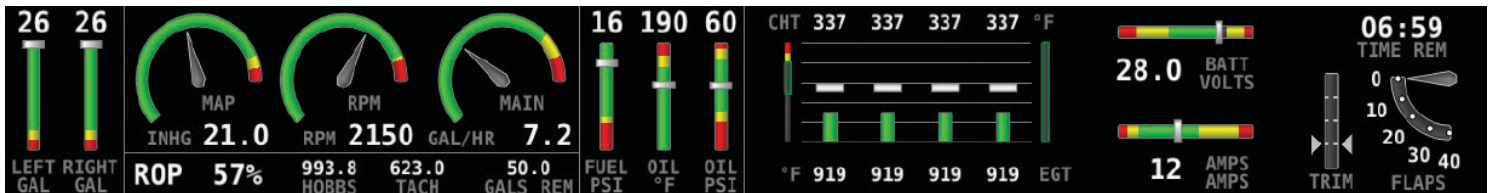
D30 Touchscreen Electronic Flight Display features a large 4" sunlight-readable, high resolution screen that provides a completely independent set of backup flight instruments.



SkyView HDX is the flagship SkyView system from Dynon, the market leader in experimental and light sport avionics. HDX features improved displays, beautiful design, unrivaled control ergonomics, and an intuitive and refined touch interface.

Engine Monitoring

SkyView's engine monitoring system can monitor all of your engine's key performance indicators, including all of your EGTs and CHTs. When equipped with a fuel flow sensor, it provides full fuel computer capability. Helpful verbal and visual alarms grab your attention when required.



Through a variety of probes and sensors, you will gain a complete picture of how your engine is operating. Monitor tach, manifold pressure, oil/fuel pressure, oil temperature, fuel quantity, fuel flow, amps, volts, up to 14 total CHT/EGT channels, and more.

ADS-B Out/In + Mode S Transponder



The SV-XPNDR-261 Mode S Transponder also enables 2020-Compliant ADS-B Out capability. The SV-ADSB-472 dual band ADS-B receiver enables the display of traffic and weather on your system.

Network Cables



Prefabricated cables interconnect SkyView Network components to make sure your installation goes as smoothly as possible. These connect displays, ADAHRS, EMS, ARINC, COM radio, and Knob & AP control panels.

IFR Connectivity Kit



The SV-ARINC-429 Module enables connectivity with certified IFR GPS/NAV devices such as the Avidyne IFD series, as well as the Garmin GNS, GTN, GPS, and similar. Equipping with an IFR navigator enables advanced features that IFR pilots demand, including autopilot-coupled approaches, GPS steering, CDI auto-scaling and vertical guidance information from ILS and WAAS-enabled GPS-equipped products.

Autopilot

Limited to Specific Makes / Models



Every Dynon autopilot can fly magnetic heading, GPS ground track, and horizontal NAV from any connected compatible radio or GPS. The autopilot also includes fully-coupled approaches, coupled VNAV, IAS Hold, Mode Sequencing, and Flight Director guidance. Additional standard features include emergency 180-degree turn capability and a LEVEL button to immediately return the aircraft to straight and level flight.

Panel Mounted Options

The following options are the components that are panel-mounted. Other optional features are installed in various non-visible aircraft locations.

COM Radio

Vertical and Horizontal Models Available



SkyView's COM radio interface will change the way you fly with dedicated buttons for tuning Tower/CTAF, ATIS/WX, ATC, and Ground frequencies.

Autopilot Control Panel

Vertical and Horizontal Models Available



Individual buttons for all autopilot modes let you use your SkyView menus exclusively for other features like navigation and flight planning. Built-in 2-axis speed-sensitive trim controller.

Knob Control Panel

Vertical and Horizontal Models Available



Dedicated controls for your barometric altimeter setting and the two bugs you use the most: Altimeter setting (BARO), Heading bug, and the Altitude bug.

HOW TO PURCHASE AND INSTALL

Since the outset of the Certified program, we've been committed to a quality experience for our customers. Each of our authorized installers offers a high quality, affordable installation and an excellent customer experience.

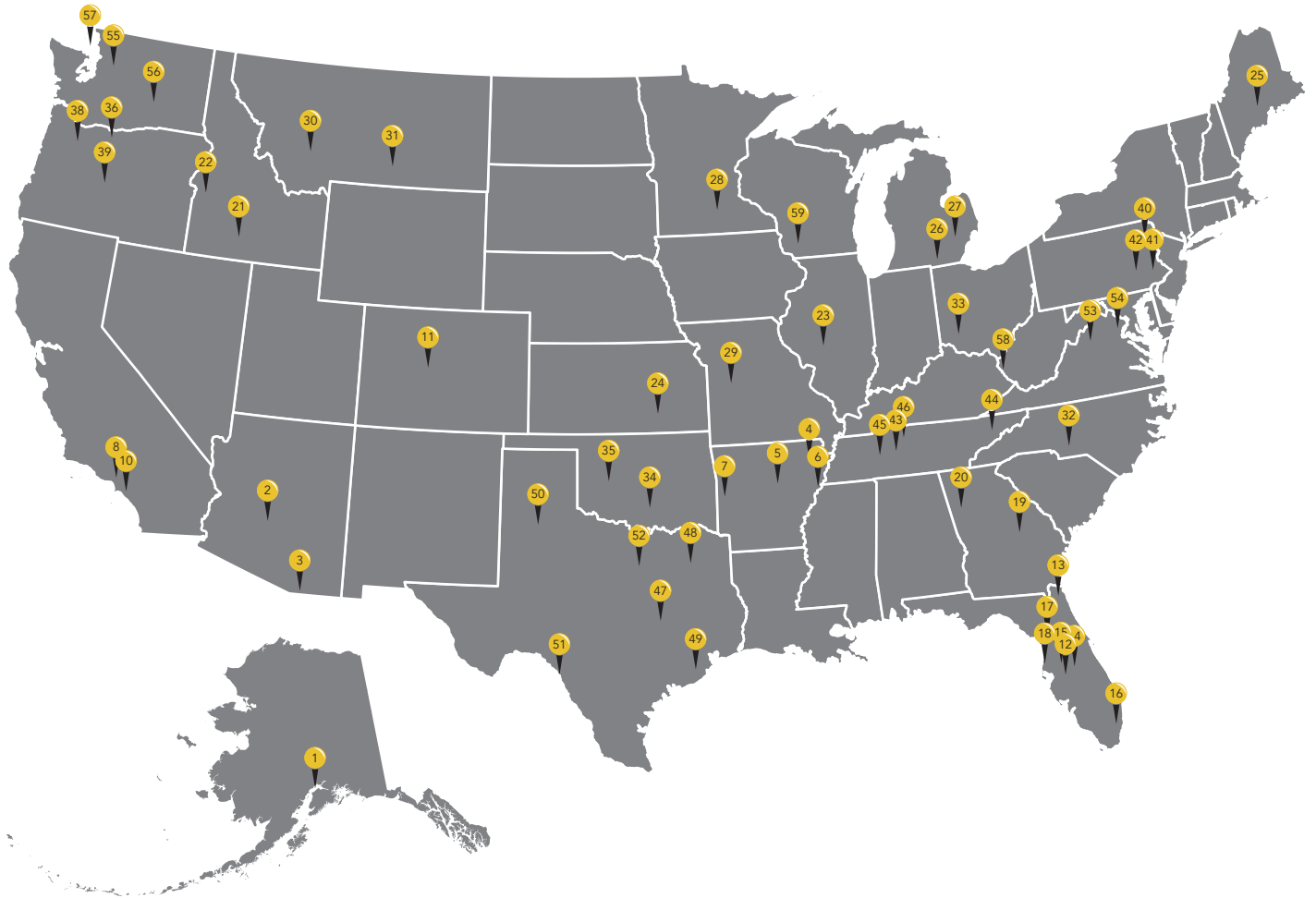
US Dynon Authorized Installation Centers	Phone
ALASKA	
1 Merrill Field Instruments Anchorage (PAMR)	907-278-5277
ARIZONA	
2 AeroSecure Avionics Glendale (KGEU)	480-340-2764
3 Miller Avionics Nigales (KOLS)	913-669-5990
ARKANSAS	
4 Edmonds Aviation Jonesboro	870-819-3569
5 Edmonds Aviation Searcy	870-217-9588
6 GABC Avionics LLC West Memphis (KAWM)	901-453-5043
7 Mid-Stream Avionics Mena (KMEZ)	479-216-9353
CALIFORNIA	
8 Aero Performance Specialties Chino (KCNO)	909-927-4600
9 Meyerflyer Aviation Redding (O85)	530-209-7496
10 Procraft Aviation Corona (KAJO)	951-858-8970
COLORADO	
11 Shavano Aviation Salida (KANK)	719-285-3588
FLORIDA	
12 Gulf Coast Avionics Lakeland (KLAL)	863-709-9714
13 Island Avionics Fernandina Beach (KFHB)	352-286-1971
14 Plane Instruments Winter Haven (GIF)	407-487-0149
15 POSAV LLC Zephyrhills (KZPH)	813-377-3089
16 RG Aero Pompano (KPMP)	561-322-9308
17 Saint Aviation Dunnellon (X35)	352-427-0285
18 SkyKing New Port Richey (FA40)	734-891-9110
GEORGIA	
19 Aviation Composites Sandersville (KOKZ)	973-243-7303
20 Ripley Air Woodstock (5GA4)	404-403-9208
IDAHO	
21 High Range Gooding (KGNG)	208-934-5934
22 Qmulus Aviation Caldwell (KEUL)	208-459-2360
ILLINOIS	
23 Temp Aircraft Springfield (KSPI)	217-899-3645
KANSAS	
24 Air Plains Wellington (KEGT)	800-752-8481
MAINE	
25 Curtis Air Pittsfield (KPSF)	207-487-5213
MICHIGAN	
26 Heinen Avionics Adrian (KADG)	484-256-8066
27 SkyKing Canton Township (1D2)	734-891-9110
MINNESOTA	
28 SteinAir Inc. Farmington (KLVN)	877-783-4624
MISSOURI	
29 Chasaero LLC. Warsaw (KRAW)	660-641-4506
MONTANA	
30 Aerotronics Billings (KBIL)	406-259-5006
31 Mountain Wave Avionics Three Forks (9S5)	406-285-1411

US Dynon Authorized Installation Centers	Phone
NORTH CAROLINA	
32 Carolina Avionics Group Salisbury (KRUQ)	704-630-0211
OHIO	
33 Warren County Avionics Lebanon (I68)	740-505-3122
OKLAHOMA	
34 Aero Valley Pauls Valley (KPVJ)	405-207-6619
35 Precision Design Weatherford (OJA)	580-772-2140
OREGON	
36 Av-Com Avionics Dallesport (4S2)	541-815-8184
37 Baker Avionics Grants Pass (3S8)	541-205-9141
38 Pacific Coast Avionics Aurora (KUAO)	503-678-6242
39 ST Avionics Sisters (6K5)	503-705-4314
PENNSYLVANIA	
40 Moyer Aviation Tobyhanna (KMPO)	570-839-7161
41 P-Factor Aviation Perkasio (KCKZ)	215-258-0777
42 Steve's Landavator Service Reading (KRDG)	484-256-8066
TENNESSEE	
43 Forge Flightworks, Inc. Smyrna (KMQY)	615-355-9970
44 James Spearman Aircraft Sevierville (KGKT)	865-366-1449
45 Pursuit Aviation Centerville (KGHM)	629-333-6484
46 Volar Lebanon (M54)	615-353-6295
TEXAS	
47 Bradley Aero College Station (KCFD)	512-422-4833
48 East Texas Flying Service Mineola (KJDD)	903-671-0116
49 Gritz Aero Roanoke (52F)	361-571-6226
50 Raider Aviation Slaton (F49)	951-375-9257
51 Rio Grande Aviation Del Rio (DRT)	830-313-2318
52 Semiplane LLC Cresson (50F)	281-723-6249
VIRGINIA	
53 Elevate Avionics Luray (KLUA)	540-742-8636
54 Sky World Aviation Midland (KHWW)	540-788-9300
WASHINGTON	
55 Aircraft Remanufacturing Co. Granite Falls (WA25)	206-251-1928
56 Blue Sky Aviation Moses Lake (W20)	503-267-1320
57 Sound Maintenance Friday Harbor (FHR)	360-969-1641
WEST VIRGINIA	
58 Hangar 9 Aviation Huntington (KHYS)	304-390-5722
WISCONSIN	
59 Edwards Aviation Service Boscobel (KOV5)	608-459-5949

For the most updated list of Dynon Authorized Installation Centers, visit www.dynoncertified.com/installation-network.php

US LOCATION MAP

Use the number in the list on the previous page to correspond to a location on the map below.



INTERNATIONAL INSTALLATION CENTERS

Dynon Authorized Installation Centers	Phone
Europe	
Cydoon Holland B.V. Beek, Netherlands (MST)	31 (0) 77-201 87 02
North America	
Global Avionique Quebec City, Quebec (YQB)	418-476-2343

Dynon Authorized Installation Centers	Phone
Australia and New Zealand	
Horsham Aviation Services Horsham, VIC 3400	03 5381 1727
ICEA Auckland, New Zealand (AMZ)	03 5381 1727

DIRECT PURCHASE & INSTALLATION

Aircraft owners may alternatively purchase the SkyView HDX system and the STC Authorization directly from Dynon and arrange installation themselves via a qualified installer.

At the time of purchase, the owner designates a qualified installer – either an A&P/IA or an avionics repair station – who will perform the installation. The installer will be specifically identified on the STC Permission Statement. The aircraft owner contracts directly with the installer for all labor related to the installation, including fabrication of the new instrument panel.

Installers are supported by Dynon’s highly regarded technical support staff and products are backed by our industry-leading 3-year warranty. The installer is directly responsible to the aircraft owner for a problem-free installation and warranty of their work.

AIRCRAFT APPROVALS

The table below details the aircraft that are currently approved for Dynon's SkyView HDX STC, which have autopilot approved, and what we are currently working on. We expect the list of planned aircraft to evolve over time.

Please note that this is our projected schedule. The timeline of certification projects of any type with the FAA is beyond any company's direct control. Please ask a Dynon staffer for further information on the specifics of each aircraft application.

OVER 600 AIRCRAFT MODELS NOW APPROVED (WITHOUT AUTOPILOT)

The full SkyView HDX system can now be installed in over 600 aircraft models, allowing more pilots than ever to benefit from Dynon's affordable avionics solutions. In order to speed development and certification, these approvals will not initially include autopilot, which requires more extensive per-aircraft R&D.

APPROVED AIRCRAFT

To determine whether the STC is approved for your particular aircraft, see the next page or check the Detailed Approved Model List at www.dynoncertified.com/aml.php

Single-Engine	Twin-Engine
Nearly 600 Piston Single Aircraft Models	Piper PA-34 Seneca I / II / III / IV / V Beechcraft Baron BE58 and BE58A

AUTOPILOT APPROVALS

Cessna 182E thru 182T, R182, T182, TR182, and T182T	Piper Seneca II / III / IV / V
Cessna 172 F thru S	Beechcraft Baron BE58 and BE58A
Beechcraft Bonanza P35, S35, V35, V35A, V35B, 36, A36, A36TC, and B36TC	

UPCOMING AUTOPILOT APPROVALS

The following autopilot projects are currently under development and are subject to change. **The exact family of sub-models, years, and serial numbers that these approvals may apply to are uncertain until certification is obtained and may change.** If Autopilot availability is crucial to your panel plans, please wait until autopilot is available for your airplane before making upgrade decisions.

Aircraft Model	Progress
Mooney M20 <ul style="list-style-type: none"> Exact submodels and serial number ranges are TBD and subject to change. Dynon has an M20J aircraft, which is part of the "mid-body" fuselage airplanes. Some variants within the "mid-body" airplanes are the most likely to be approved in this project. 	
Beechcraft 35-C33A Debonair <ul style="list-style-type: none"> Exact submodels and serial number ranges are TBD and subject to change. Dynon's Debonair demonstrator is a 1966 35-C33A model. The Beech 33 Debonair family encompasses a range of aircraft with differences that Dynon is currently evaluating. Dynon does not yet know which of these models the upcoming autopilot approval will apply to. 	

For the most up-to-date information for autopilot approvals, visit www.dynoncertified.com/aml.php

NEARLY 600 MODELS APPROVED (AML++)

Dynon SkyView HDX is approved for nearly 600 Piston Single Aircraft Models. To determine whether the STC is approved for your particular aircraft, see the list below. You can see a Detailed Approved Model List at www.dynoncertified.com/aml.php

Aermacchi F.260, F.260B, F.260C, F.260D, F.260E, F.260F, S.205-18/F, S.205-18/R, S.205-20/F, S.205-20/R, S.205-22/R, S.208, S.208A

Aero Commander 10, 10A, 100, 100A, 100-180

American Champion 7ECA, 7GCAA, 7GCBC, 7KCAB, 8KCAB, 8GCBC

AUGUSTAIR 2150, 2150A, 2180

Aviat A-1, A-1A, A-1B, A-1C-180, A-1C-200

Pitts S-1S, S-1T, S-2, S-2A, S-2S, S-2B, S-2C

Beechcraft 19A, B19, M19A, 23, A23, A23A, A23-19, A23-24, B23, C23, A24, A24R, B24R, C24R, P35, S35, V35, V35A, V35B, 36, A36, A36TC, B36TC, 35-33, 35-A33, 35-B33, 35-C33, 35-C33A, E33, E33A, E33C, F33, F33A, F33C, G33, H35, J35, K35, M35, N35, 35, A35, B35, C35, D35, E35, F35, G35, 45 (YT-34), A45 (T-34A, B-45), D45 (T-34B), 77, D17S (Army UC-43, UC-43B, Navy GB-1, GB-2), SD17S, G17S

Twin-engines: Baron 58, 58A

Bellanca 14-13-2, 14-13-3W, 14-13-3, 14-13, 14-19, 14-19-2, 14-19-3, 14-19-3A, 17-30, 17-31, 17-31TC, 17-30A, 17-31A, 17-31ATC

Boeing BC-1A, AT-6 (SNJ-2), AT-6A (SNJ-3), AT-6B, AT-6C (SNJ-4), AT-6D (SNJ-5), AT-6F (SNJ-6), SNJ-7, T-6G

Callair A, A-2, A-3, A-4, A-5, A-5T, A-6, A-7, A7T, A-9, A-9B, B-1, B-1A

Cessna 140A, 120, 140, 150, 150A, 150B, 150C, 150D, 150E, 150F, 150G, 150H, 150J, 150K, A150K, 150L, A150L, 150M, A150M, 152, A152, 170, 170A, 170B, 172F (USAF T-41A), 172G, 172H (USAF T-41A), 172I, 172K, 172L, 172M, 172N, 172P, 172Q, 172R, 172S, 172, 172A, 172B, 172C, 172D, 172E, 175, 175A, 175B, 175C, P172D, R172E (USAF T-41B), (USAF T-41C or D), R172F (USAF T-41D), R172G (USAF T-41C or D), R172H (USAF T-41D), R172J, 172RG, R172K, 177, 177A, 177B, 177RG, 180, 180A, 180B, 180C, 180D, 180E, 180F, 180G, 180H, 180J, 180K, 182, 182A, 182B, 182C, 182D, 182E, 182F, 182G, 182H, 182J, 182K, 182L, 182M, 182N, 182P, 182Q, 182R, 182S, 182T, R182, T182, TR182, T182T, 185, 185A, 185B, 185C, 185D, 185E, A185E, A185F, 190, 195 (LC-126 A,B,C), 195A, 195B, 206, P206, P206A, P206B, P206C, P206D, P206E, TP206A, TP206B, TP206C, TP206D, TP206E, U206, U206A, U206B, U206C, U206D, U206E, U206F, U206G, TU206A, TU206B, TU206C, TU206D, TU206E, TU206F, TU206G, 206H, T206H, 207, T207, 210, 210A, 210B, 210C, 210D, 210E, 210F, T210F, 210G, T210G, 210H, T210H, 210J, T210J, 210K, T210K, 210L, T210L, 210M, T210M, 210N, T210N, 210R, T210R, 210-5 (205), 210-5A (205A), (USAF O-1A) 305A, (USAF O-1E) 305C, (USAF O-1G) 305D, 305F, (Military 305B TO-1D, O-1D, O-1F) 305E, FR172E, FR172F, FR172G, FR172H, FR172J, FR172K, F172D, F172E, F172F, F172G, F172H, F172K, F172L, F172M, F172N, F172P, FP172D, F177RG, F182P, F182Q, FR182

Commander 112, 112TC, 112B, 112TCA, 114, 114A, 114B, 114TC

Cub Crafters CC19-180

DeHavilland Beagle B.121 Series 1, Beagle B.121 Series 2, Beagle B.121 Series 3

Discovery XL-2

EADS-PZL PZL-104 WILGA 80, PZL-104M WILGA 2000, PZL-104MA WILGA 2000, PZL-KOLIBER 150A, PZL-KOLIBER 160A

Found Brothers FBA Centennial 100

Fuji FA-200-160, FA-200-180, FA-200-180AO

Grumman / American General AA-5, AA-5A, AA-5B, AG-5B, AA-1, AA-1A, AA-1B, AA-1C

Helio H-250, H-295 (USAF U-10D), HT-295, H-391 (USAF YL-24), H-391B, H-395 (USAF L-28A or U-10B), H-395A, H-700, H-800

Howard DGA-15P (Army UC-70; Navy GH-1, GH-2, GH-3, NH-1), DGA-15J (Army UC-70B), DGA-15W, DGA-11, DGA-9 (Army UC-70D), DGA-12 (Army UC-70A), DGA-18 DGA-18K, DGA-8 (Army UC-70C)

Interceptor 200, 200A, 200B, 200C, 200D, 400

JGS 11E

Luscombe 8A, 8B, 8C, 8D, 8E, 8F, 8, T-8F

Maule Bee Dee M-4, M-4, M-4C, M-4S, M4T, M-4-180C, M-4-180S, M-4-180T, M-4-180V, M-4-210, M4-210C, M-4-210S, M-4-210T, M-4-220, M-4-220C, M4-220S, M-4-220T, M-5-180C, M-5-200, M-5-210C, M5-210TC, M-5-220C, M-5-235C, M-6-180, M6-235, M-7-235, MX-7-235, MX-7-180, MX-7-420, MXT-7-180, MT-7-235, M-8-235, MX-7-160, MXT-7-160, MX-7-180A, MXT-7-180A, MX-7-180B, M-7-235B, M-7-235A, M-7-235C, MX-7-180C, M-7-260, MT-7-260, M-7-260C, M-7-420AC, MX-7-160C, MX-7-180AC, M7-420A, MT-7-420

Monocoupe 90, 90A, 90AF, 90AF-100, 90AL-115

Mooney M22, M20, M20A, M20B, M20C, M20D, M20E, M20F, M20G, M20J, M20K, M20L, M20M, M20R, M20S

Nardi FN-333

Navion NA-154 / L-17A, Navion A (L-17B, L-17C), Navion B, Navion D, Navion E, Navion F, Navion G, Navion H

Pacific Aerospace FBA-2C, FBA-2C1 (Bush Hawk), FBA-2C2 (Bush Hawk XP)

Piper PA-12, PA-12S, PA-16, PA-16S, PA-18, PA-18 "105", PA-18 125 (Army L-21A), PA-18S, PA-18S "105", PA-18S 125, PA-18AS 125, PA-18 135 (Army L-21B), PA-18A, PA-18A 135, PA-18S 135, PA-18AS 135, PA-18 150, PA-18A 150, PA-18S 150, PA-18AS 150, PA-19 (Army L-18C), PA-19S, PA-20, PA-20S, PA-20 "115", PA-20S "115", PA-20 "135", PA-20S "135", PA-22, PA-22-108, PA-22-135, PA-22S-135, PA-22-150, PA-22S-150, PA-22-160, PA-22S-160, PA-24, PA-24-250, PA-24-260, PA-24-400, PA-28-140, PA-28-150, PA-28-151, PA-28-160, PA-28-161, PA-28-180, PA-28-235, PA-28S-160, PA-28R-180, PA-28S-180, PA-28-181, PA-28R-200, PA-28R-201, PA-28R-201T, PA-28RT-201, PA-28RT-201T, PA-28-201T, PA-28-236, PA-32-260, PA-32-300, PA-32S-300, PA-32R-300, PA-32RT-300, PA-32RT-300T, PA-32R-301(SP), PA-32R-301(HP), PA-32R-301T, PA-32-301, PA-32-301T, PA-32-301FT, PA32-301XTC, PA-38-112

Twin-engines: PA-34-200 Seneca I, PA-34-200T Seneca II, PA-34-220T Seneca III, PA-34-220T Seneca IV, PA-34-220T Seneca V

PZL M26 01

Revo COLONIAL C-1, COLONIAL C-2, LAKE LA-4, LAKE LA-4A, LAKE LA-4P, LAKE LA-4-200, LAKE MODEL 250

Socata, Rallye 100S, Rallye 150ST, Rallye 150T, Rallye 235E, Rallye 235C, MS 880B, MS 885, MS 894A, MS 893A, MS 892A-150, MS 892E-150, MS 893E, MS 894E, TB 9, TB 10, TB 20, TB 21, TB 200

Spartan Spartan 7W

Stinson 108, 108-1, 108-2, 108-3, 108-5

STOL RC-3

Swift GC-1A, GC-1B

Symphony OMF-100-160, SA 160

Trident TR-1

WACO YMF, 2T-1A, 2T-1A-1, 2T-1A-2

Zenair CH2000

ZLIN Z-242L, Z-143L, ZLIN 562L

FREQUENTLY ASKED QUESTIONS

When will my aircraft make and model receive an STC?

How do I get started?

The current Approved Model List (AML) already covers nearly 600 aircraft models, and Dynon will continually expand the approved model list (AML) even further in the future. The list of aircraft currently under development can be found at the Dynon Certified website. To help Dynon prioritize your aircraft, visit dynoncertified.com and send us your information. We will let you know when we add your aircraft to the STC.

Is the Dynon autopilot certified under the STC?

Yes, even the first airplanes with Dynon Certified products installed have Dynon Autopilots installed. Although the broad Approved Model List that applies to nearly 600 aircraft does not include autopilot approval in many models, Dynon is adding autopilot approvals continuously.

How much do Dynon Certified products cost? How much is the STC?

Dynon's list pricing for the PMA/certified versions of its products are the same as the LSA/Experimental customers. The STC for all piston single aircraft is \$2,678. For complete pricing information see dynoncertified.com

Is SkyView HDX for certified aircraft TSO'd and/or PMA'd?

The design and installation approval for SkyView HDX are both covered by the STC. There are no TSO approvals needed. Dynon Certified products are produced under PMA in our facilities near Seattle, WA.

I am not in the US. Can I install a Dynon EFIS in my type certificated aircraft?

The FAA STC applies to aircraft governed by FAA regulations. There are some countries that accept this STC as-is or via reciprocal agreement. EASA aircraft are not currently approved. Contact Dynon for more information.

Is the Dynon D30 or EFIS-D10A required as part of the STC? Can I use a different backup instrument? What if I opt for two SkyView HDX displays?

There are two standby displays approved under the STC: The Dynon D30 and the EFIS-D10A. Either of these instruments serves as an independent backup to SkyView HDX. It is required by the STC, even if you opt for multiple SkyView HDX displays. It can not be substituted by other instruments.

Can I install the D30 by itself?

No. The D30 is only approved as a backup instrument to SkyView HDX. It can not be installed as a standalone instrument.

How can I buy and install Dynon Certified products in my aircraft?

Installations are currently available through a network of Dynon Authorized Installation Centers throughout the US. For a current list of installation centers, visit dynoncertified.com. It is also possible to install Dynon Certified equipment into eligible aircraft through direct purchase when installed by a qualified installer of your choosing. See the website for more details.



Will I be able to remove all of my old instruments? Or does SkyView HDX replace only some of them?

In most aircraft, yes, SkyView HDX replaces all your primary flight and engine instruments. You can finally say goodbye to that unreliable vacuum pump too.

Can SkyView HDX connect to my IFR GPS navigator?

Yes. SkyView HDX is compatible with popular navigators like the Avidyne IFD series and the GTN/GNS series.

Can I fly coupled approaches?

Yes, when equipped with the Dynon autopilot and a 3rd party ILS receiver or IFR GPS with precision approach capability.

Can I fly SkyView HDX in IFR?

Yes, SkyView does not change the aircraft certification basis or operating limitations. All of the primary flight instruments, including attitude, are fully IFR capable. To navigate via IFR, you will still need a connected IFR-approved GPS or other IFR NAV source to feed guidance data to the SkyView display.

Can I install SkyView HDX in my type certificated aircraft myself?

STC installations ultimately require approval from an A&P with Inspection Authorization (IA), and will require an FAA form 337.

Can SkyView HDX connect to my current autopilot?

SkyView HDX has its own built-in autopilot capability that requires the installation of Dynon servos.

Does this system make me 2020-compliant for ADS-B Out?

Yes, it can. One of the available SkyView HDX features is a 2020-compliant ADS-B Out Mode S Transponder and a compliant GPS position source.

Do I have to install the full system?

Dynon has a variety of system configurations available to tailor an installation to your aircraft. This can include omitting some products that you choose to not install.

Are all of the sensors in the screen/display?

The SkyView displays are the heart of the system, but many of the sensors and system components, such as the engine monitoring module, transponder, ADS-B and flight instrument sensors are in separate modules that are designed for easy installation.

Can I purchase from the same dealers as your experimental products? Can I repurpose used products from an LSA or E-AB Aircraft?

No. The certified versions are PMA'd. They are not interchangeable with Experimental / LSA products.

Where can I see a demo of SkyView HDX?

Dynon goes to most major aviation fly-ins and events. See dynon.aero/events for the full schedule.



DYNON

GPS

ALT 8500

1200 ALT R

17:29:21 U

456

122.900 MCOM

KPAE 132.950 TWR2

456

---KTS

8500 FT

8500

096

096

096

GPS ALT

8749 FT

NEXT WPT

456

DTW

54.2 NM

ETE NEXT

00:28

LOCATION

N 46°58' 890'

W 122°20' 333'

DEST WPT

456

DIST TO GO

54.2 NM

ETE FINAL

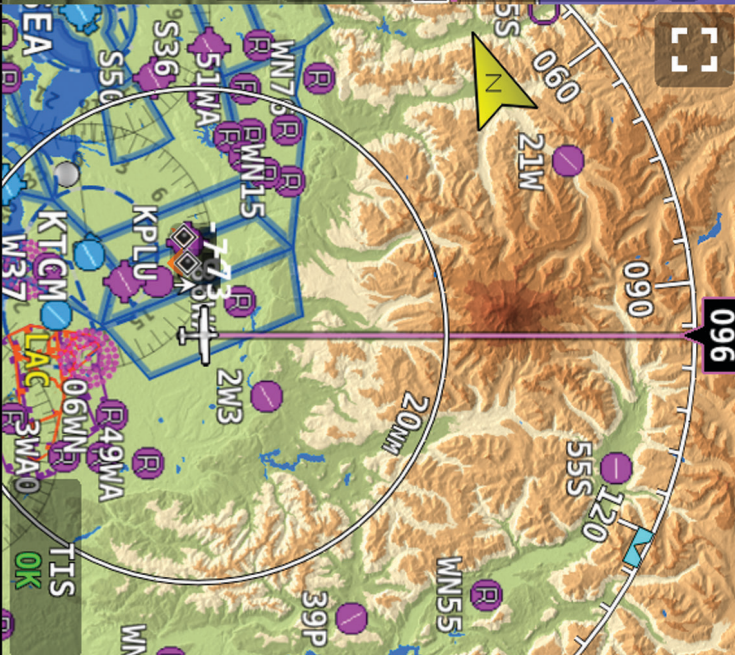
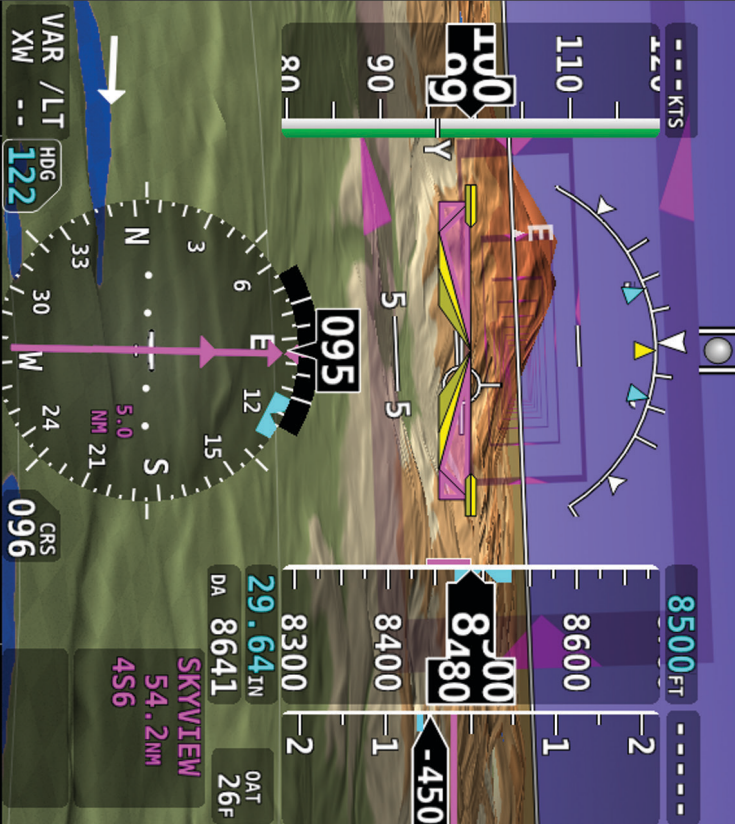
00:28

ETA FINAL

17:58 U

VSR 456

192 FPM



GPS ALT 8749 FT
 NEXT WPT 456
 DTW 54.2 NM
 ETE NEXT 00:28
 LOCATION N 46°58' 890'
 W 122°20' 333'
 DEST WPT 456
 DIST TO GO 54.2 NM
 ETE FINAL 00:28
 ETA FINAL 17:58 U
 VSR 456
 192 FPM



VAR / LT 122
 HDG 095
 CRG 096
 SKYVIEW 54.2 NM
 456

DA 8641
 OAT 26 F
 SKYVIEW 54.2 NM
 456



RPM 2480
 MAP 21.0
 INHG 21.0
 RPM 2480
 GAL/HR 8.4
 FUEL 16
 OIL 204
 PSI 60

CHT 384
 384
 384
 384
 °F
 BATT 28.0
 VOLTS
 AMP 12
 TRIM 0
 FLAPS 20

(HDG) (RST) (INFO) (MENU) (DISPLAY) (NO MSG) (MAP)

Actual size SkyView SV-HDX1100 10" Display

For planning use only. Do not use as a panel-cutting template.

PLANNING YOUR PANEL



Actual size SkyView SV-HDX800 7" Display



Actual Size Control Panels
For planning use only. Do not use as a panel-cutting template.

PLANNING YOUR PANEL



Actual size SkyView SV-HDX800 7" Display



Actual Size Control Panels

For planning use only. Do not use as a panel-cutting template.

DYNON

GPS ALT 8500 17:29:21u 4S6 122.900 MCOM KPAE 132.950 TWR2 4S6

GPS ALT 8749FT NEXT WPT 4S6 DTW 54.2NM ETE NEXT 00:28 LOCATION N 46°58.890' W 122°20.333' DEST WPT 4S6 DIST TO GO 54.2NM ETE FINAL 00:28 ETA FINAL 17:58 U VSR 4S6 192 FPM

8500FT 8600 8400 8300 29.64IN DA 8641 SKYVIEW 54.2NM 4S6

110 109 90 80

095

VAR /LT 122 HDG XW 24 24

MAP 21.0 RPM 2480 GAL/HR 8.4 ROP 66% HOBBS 111.2 TACH 0.0 GALS REM -9.7

16 204 60

28.0 BATT VOLTS 12 AMPS

0°

096

090 090 090 090

21W 55S 120 55S 39P

WN76 R WN15 R 51WA R S36 R S50 R WN R 2W3 R R49WA R 06WN R LAC R 3WA0 R

KPLU KTCM W37 WEA

TIS OK

CHT 384 384 384 384 °F °F 1048 1048 1048 1048 EGT

FPL MENU DISPLAY NO MSG

INFO NRST

(HDBG)

Actual size SkyView SV-HDX1100 10" Display
For planning use only. Do not use as a panel-cutting template.

DYNON CERTIFIED

DYNONCERTIFIED.COM



@dynonavionics

19825 141st PL. NE, Woodinville, WA 98072
(425) 650-1269 • sales@dynon.com

DYNON.COM