

# ADVANCED<sup>TM</sup> FLIGHT SYSTEMS



## AVIONICS CATALOG

**ADVANCEDPANEL, AF-6600, AND AF-5000 SERIES FOR  
EXPERIMENTAL AND LIGHT SPORT AIRCRAFT**



Started in 1999, Advanced Flight Systems is a classic family entrepreneurial story. An electrical engineer with software expertise, founder/owner Rob Hickman created an engine monitor for the RV-4 he was building. Other local builders expressed interest, and a company was born. After almost two decades of innovation, Advanced Flight Systems is now part of the Dynon family of companies. For his contributions to the industry through Advanced Flight Systems, Rob Hickman was inducted into the EAA Homebuilders Hall of Fame in 2017.

Today, Advanced Flight Systems is the premier, concierge-class provider of avionics solutions for your experimental aircraft. We're the only panel-crafter that makes almost everything ourselves, including the avionics, software, panel, harnesses, and even the power and wiring distribution system. When you choose Advanced, you benefit from over 20 years of innovations that propelled us from our beginnings as a family business to the trusted company we are today. Let our expert pilots, advisors, and support staff help you every step of the way as we design and build an **ADVANCEDPANEL** that is worthy of your aircraft.

## **At Advanced, We Go Beyond**

# TABLE OF CONTENTS

## ADVANCEDPANEL

Advanced Panel Process .....3-4

Advanced Panel System ..... 5

Advanced Panel VFR and IFR Options ..... 6

Advanced Panel VFR Examples..... 7

Advanced Panel IFR Examples ..... 8

## ADVANCED SYSTEM

Advanced Features..... 9-10

AF-6600 Display ..... 11

AF-5800 Display ..... 12

AF-5700 Display ..... 12

AF-5600 Display ..... 12

AF-5500 Display ..... 12

## SYSTEM COMPONENTS

Components..... 13-16

## SYSTEM WORKSHEET

Primary Flight Displays and Navigation..... 17

AOA/Pitot Probes..... 17

Engine Monitoring..... 18

Autopilot ..... 18

Transponders, ADS-B In/Out, Traffic and Weather..... 18

Radios, Intercom and Audio..... 18

## PANEL PLANNER (ACTUAL SIZE CUT OUTS)

AF-5600 10.4" Display ..... 19

Control Panels (Horizontal)..... 20

Control Panels (Vertical)..... 21

AF-5500 8.4" Display ..... 22



# ADVANCEDPANEL™



## THE PROCESS

### Think about your aircraft's mission.

Are you equipping for VFR or IFR? If you want to plan a panel with a future upgrade in mind - we can do that. This usually means a VFR panel with a cutout for a future IFR navigator, or maybe a panel with a single-screen EFIS with the plan to add a second screen. We can build your **ADVANCEDPANEL** with this in mind.

### Think about whether you prefer Advanced AF-5000 or Dynon SkyView HDX.

Both systems are from our Dynon family of products and use the same "behind-the-scenes" components. If you're not sure which system to go with, we can help you decide.

### Work with our experts to customize and design your panel.

If you need some inspiration, browse our site for examples of **ADVANCEDPANEL** installations in your aircraft type. We have built many **ADVANCEDPANELs** for RV-7, RV-8, RV-9, RV-10, RV-14, Glasair Sportsman, CubCrafters, Kitfox, RANS, and Sonex aircraft. If you fly something else, give us a call. We can likely develop an **ADVANCEDPANEL** for YOUR airplane. We'll send you a quote listing all the parts (with detailed pricing) that will be included in your **ADVANCEDPANEL**.





## IFR VAN'S RV-10 WITH AEROSPORT CARBON FIBER PANEL From \$53,700

### Sit back and relax while we engineer, craft, and configure your panel.

Once you have approved the design, your panel is CNC machined, powder coated, labeled, and fully assembled. This process can take several weeks, during which we are building your harnesses and assembling, testing and Configuring your panel components. We send you the peripheral components that get installed throughout the aircraft so you can make progress before your **ADVANCEDPANEL** arrives. We're sure you have other things to finish on your airplane. So, let us save you hundreds of hours in wiring, configuration, and frustration.

### Install your **ADVANCEDPANEL**.

Your **ADVANCEDPANEL** will arrive carefully packaged, along with any other components that were part of your order, ready to install in your aircraft. With it will be a detailed packing list, schematics, and detailed configuration specs showing each part, by part number (and serial number, when applicable), to make taking an inventory of your shipment easy. Your **ADVANCEDPANEL** will also come with full schematics and detailed configuration specifications to help you get up and running quickly. Our **ADVANCEDPANEL** manual has step-by-step instructions for installing the components, connecting your aircraft systems (lights, boost pump, flaps, etc) and testing the system. Connect to power, pitot static, autopilot servos, and any other systems in your aircraft and you're ready to...

### Go Fly... and send us some pictures!

# ADVANCEDPANEL™

## YOUR AIRCRAFT EVOLVED

As an aircraft homebuilder, are you worried about wiring today's increasingly complex systems? The **ADVANCEDPANEL** process lets you entrust this important aspect of your aircraft to the people that know aircraft systems best. You can focus on your perfect panel design while we handle the heavy lifting. We take the entire process of building your avionics, electrical system, and other aircraft systems and simplify them into a unique guided process. It starts with our expert, bespoke design services and ends with a drop-in integrated system that cuts hundreds of hours off your project.

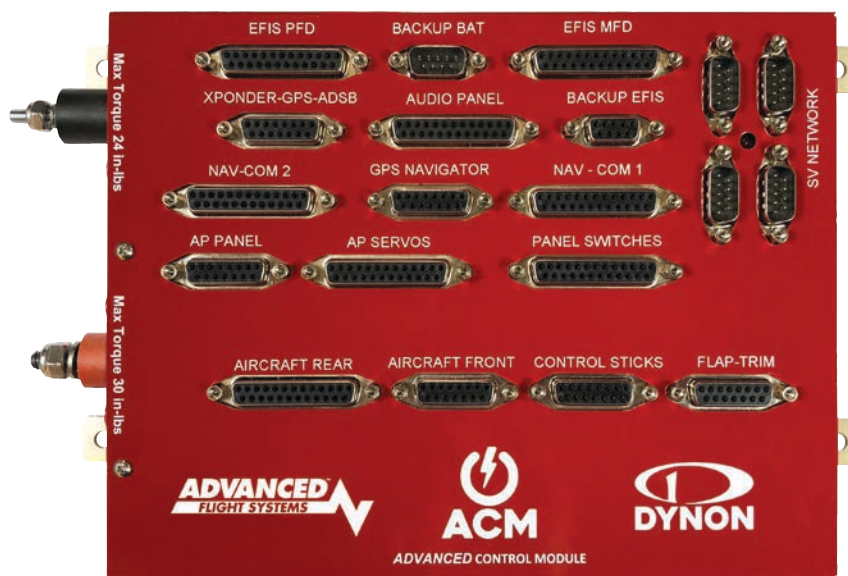
While you spend your time completing your aircraft's construction and worrying about your paint scheme, **ADVANCED** takes the panel design we collaborate on and brings it to life. You receive a ready-to-install **ADVANCEDPANEL**, complete with pre-configured, pre-wired avionics already installed.

After following the simple instructions to mate your **ADVANCEDPANEL** to your aircraft, you're done. Want to fly sooner? Give us a call.

## ADVANCED CONTROL MODULE

At the heart of every **ADVANCEDPANEL** is the groundbreaking Advanced Control Module. It's the first and only comprehensive smart power and distribution center for your aircraft's electrical system, avionics, headsets, aircraft lights, autopilot servos, trim servos, flap motor, control sticks, and panel switches. All of these connect to the ACM with customized harnesses we provide, enabling a "plug and play" installation while saving you hundreds of hours of wiring, crimping, troubleshooting and frustration. The ACM provides no-mistake wiring, easy diagnostics, and the best possible future proofing for upgrades down the road.

The ACM-ECB (Electronic Circuit Breaker) offers EFIS-based monitoring and control of your aircraft's electrical system.



- 27 Channels of circuit protection (ECB version)
- Built-in ARINC module for IFR navigator connectivity
- Multi-step Flap Positioning System
- Wig-Wag lighting circuit, with automated airspeed-sensitive control
- Panel dimmer
- Trim Controller (must have SV-AP-PANEL)
- SkyView Network Hub (4 Port + AP Servos)
- Panel switch interface with support for dimmable in-switch lights
- Control stick interface





**VFR VAN'S AIRCRAFT RV-7/9**  
With SkyView HDX  
From \$30,100

### VFR ADVANCEDPANEL Include:

- Touchscreen PFD
- Touchscreen MFD
- ADAHRS
- COM Radio
- WAAS GPS
- Mode-S Transponder
- ADS-B Traffic and Weather
- 2020-Compliant ADS-B Out
- Two-Place Stereo Intercom
- Audible and on-screen AOA
- Full engine & systems monitoring
- Advanced Control Module with electronic circuit breakers
- Switches and audio jacks
- Powder coated and custom-labeled instrument panel
- Wi-Fi Module to enable iPad connectivity



**IFR VAN'S AIRCRAFT RV-10**  
With AF-6600  
From \$49,750

### IFR ADVANCEDPANEL Include:

- Touchscreen PFD
- Touchscreen MFD
- ADAHRS
- COM Radio
- Redundant WAAS GPS position sources
- Mode-S Transponder
- 2020-Compliant ADS-B Out
- ADS-B Traffic and Weather
- Advanced Control Module with Electronic Circuit Breakers
- Audible and on-screen AOA
- Full engine & systems monitoring
- Switches and audio Jacks
- Powder coated and custom-labeled instrument panel
- Wi-Fi Module to enable iPad connectivity
- Avidyne IFD Series GPS Navigator - Touchscreen FMS/GPS/NAV/COM
- Independent Backup EFIS
- Many full-featured audio panels supported

# ADVANCEDPANEL™

## VFR AF-6600 CARBON CUB

From \$25,100



## VFR AF-6600 RANS AIRCRAFT S-21

From \$33,300



## VFR SKYVIEW SONEX AIRCRAFT B-MODELS

From \$24,800





## IFR AF-6600 GLASAIR SPORTSMAN

From \$47,800



## IFR AF-6600 VAN'S AIRCRAFT RV-8

From \$44,400



## IFR SKYVIEW VAN'S AIRCRAFT RV-14

From \$47,000



# ADVANCED FEATURES



**Weight & Balance:** Instantly calculate your CG and load with our Weight and Balance page.

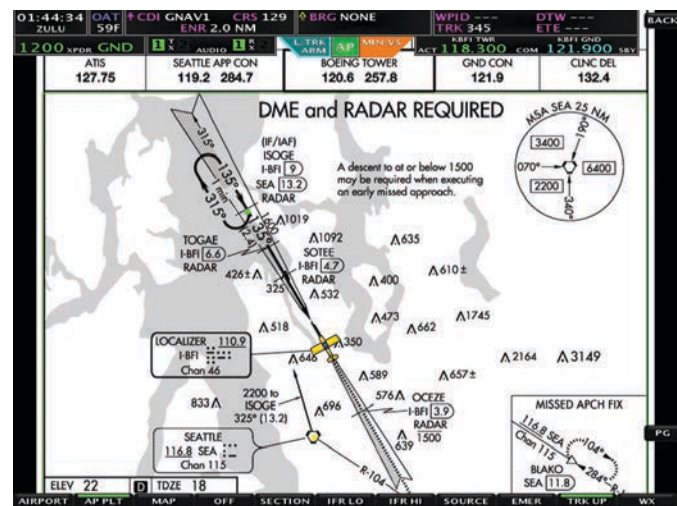


**Map + Air Data Page:** A unique layout that shows everything you need for VFR flight on one screen.



**Airport/Airspace Information:** Complete airport information; including - runways, frequencies, METAR's, TAF's and pattern altitudes.

**Airspace Information:** Selectable airspace information; including - highlight current boundaries and display the vertical limits. Lets you easily select and display overlapping complicated airspaces, reducing pilot workload.



**Approach Plates, VFR Sectionals & IFR Charts:** Geo-Referenced Approach Plates, Sectionals and IFR Low Charts display your aircraft's current location, as well as traffic. Updated every 28 days, display in full-screen or split-screen mode.





**EMERGENCY Glide:** Calculates and displays airports that are within your aircraft's engine-out glide range.



**GPS and ILS Display:** CDI and VDI displayed from external GPS navigator or Nav radio.



**Aircraft Maintenance Logs:** Keeps track and alerts you when it's time for Oil Changes, Annual Inspections, ELT Batteries, Filters, Brakes or any other user configurable item.



**Flight Planning:** Loads multi-leg flight plan from an external GPS navigator or allows user input from EFIS Screen.



# ADVANCED DISPLAYS

AF series displays are the star of your Advanced Flight Systems panel. The new AF-6600 flagship features a number of upgrades while maintaining compatibility with the popular AF-5000 line. Mix and match them in your panel. All Advanced EFIS models feature high resolution, touchscreen LCD displays, five RS-232 serial ports, two USB ports, ethernet, and Advanced-SV Network connections for comprehensive compatibility with Advanced, Dynon SkyView components, and many third-party devices.

## 10.4" AF-6600 DISPLAY



**Weight:** 4 lb. (1.8 kg)

**Power :** 3A @12V DC

**Dimensions:** 8.15"H x 10.25"W

### • Improved Performance

- ° New processor enables 60 Hz screen updates for amazingly smooth visuals: a 4-12x improvement over previous generations.
- ° New LCD screen features increased brightness and more vivid colors.
- ° Start-up time decreased to under 20 seconds.

### • AF-5000 Series Compatible

- ° Wiring and mounting is exactly the same as AF-5600 displays for easy upgrades.
- ° AF-6600 and AF-5000 series displays are fully cross-compatible and can be mixed in a panel.

### • Sharp Design

- ° Redesigned, flush-mounted 10.4" touchscreen that you'll be proud to showcase in your panel.

### • Improved Pilot Interface

- ° Dual-Concentric encoder knob affords a more intuitive user interface.
- ° Ambient light sensor allows display backlight to automatically adjust to cockpit lighting conditions.

### • Lighter and More Compact

- ° Low profile rear cover reduces panel depth requirements
- ° Approximately 1 pound lighter than previous AF displays.

PART#	NOTES	PRICE
AF-6600	10.4" Touchscreen	\$4690

## 8.4" AF-5500, 10.4" AF-5600, and 12.1" AF-5800 DISPLAYS

The 4:3 aspect ratio touchscreen display gives you a wide and tall picture that affords exceptional situational awareness. Additional buttons and knobs along the right side of the display dynamically reconfigure to the task at hand, freeing you up from hunting for features deep in menus. Connect multiple screens together and you can display any combination of EFIS, Engine Monitor, and Map across your screens.



**8.4" AF-5500 Display**

Weight: 4.2 lb. (1.9 kg)

Power : 3A @12V DC

Dimensions: 8.125"H x 9.125"W



**10.4" AF-5600 Display**

Weight: 5 lb. (2.27 kg)

Power : 3A @12V DC

Dimensions: 8.15"H x 10.25"W



**12.1" AF-5800 Display**

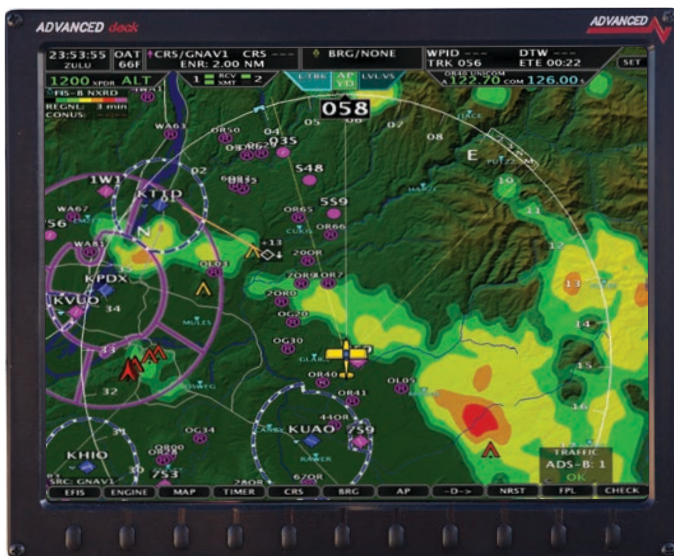
Weight: 5.4 lb. (2.45 kg)

Power : 3A @12V DC

Dimensions: 9"H x 11.5"W

PART#	NOTES	PRICE
AF-5500T	8.4" Touchscreen	\$4000
AF-5600T	10.4" Touchscreen	\$4490
AF-5800T	12.1" Touchscreen	\$5200

## 12.1" AF-5700 DISPLAY



The AF-5700 touchscreen display - featuring an updated ADVANCED Touch interface - is the smallest form factor 12" class EFIS available. The display combines the largest-in-class 12.1" screen with a minimized installation footprint, affording pilots the opportunity to install a large screen EFIS in an instrument panel that previously could not support one.

Weight: 5.1 lb. (2.31 kg)

Power : 3A @12V DC

Dimensions: 8.90"H x 10.85"W

PART#	NOTES	PRICE
AF-5700T	12.1" Touchscreen. Must be installed with AF-6600, AF-5500, AF-5600, or AF-5800 display.	\$4800

# COMPONENTS

## VHF COM Radio



Dynon's revolutionary COM radio interface will change the way you fly with dedicated buttons for tuning Tower/CTAF, ATIS/WX, ATC, and Ground frequencies. Can be installed with or without SV-COM-PANEL in AFS systems only.

Weight: 1.13 lb (0.51 kg)

Power: 0.2A Receive, 2.0A Transmit @12V DC for SV-COM-X83 / X25

MODEL#	NOTES	PRICE
SV-COM-T25 + SV-COM-PANEL	Vertical or Horizontal COM Panel versions available; 25kHz spacing only, TSO'd transceiver.	\$1375
SV-COM-T8 + SV-COM-PANEL	Vertical or Horizontal COM Panel versions available; 8.33 kHz spacing, TSO'd transceiver.	\$2330

## Autopilot Control Panel



Individual buttons for all autopilot modes let you use your Advanced menus exclusively for other features like navigation and flight planning. Built-in 2-axis speed-sensitive trim controller.

Weight: 0.3 lb. (0.15 kg)

Power: 0.05A @12V DC

MODEL#	NOTES	PRICE
SV-AP-PANEL	AP panel button features require use of autopilot in expert mode.	\$645

## Knob Control Panel



Dedicated controls for your barometric altimeter setting and the two bugs you use the most.

Weight: 0.4 lb. (0.18 kg)

Power: 0.07A @12V DC

MODEL#	NOTES	PRICE
SV-KNOB-PANEL	Available in horizontal and vertical versions.	\$325

## Two-Place Stereo Intercom



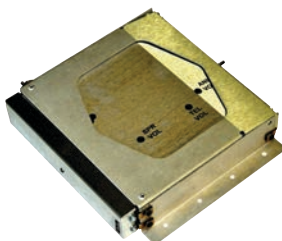
Stereo, two-place intercom with audio connectivity for EFIS alerts and music that is usually only found in full-size audio panels.

Weight: 0.45 lb. (.204 kg)

Power : 0.1A @12V DC

MODEL#	NOTES	PRICE
SV-INTERCOM-2S	Includes horizontal and vertical faceplates, stereo headset jacks.	\$295

## EFIS Controlled Remote Audio Panel



A full audio panel without using valuable panel space. Now featuring IntelliAudio® True Dimensional Sound to hear multiple radios simultaneously, spatially separated in your headset. Also includes Enhanced Bluetooth® with music streaming capability. Other features include legendary 4-place hi-fi stereo IntelliVox® intercom with Soft Mute, two stereo music inputs, split mode, and multiple other inputs. Manufactured by PS Engineering for AFS.

MODEL#	NOTES	PRICE
AF-PMA450EX-R	Compatible with AF-5000 series systems only.	\$2279



## ADAHRS - Primary and Secondary



Provides primary flight instruments, including attitude, airspeed, altitude, magnetic heading, HSI, VSI, AOA, G-meter, turn rate, slip/skid ball, OAT, and TAS. Add a secondary ADAHRS for redundancy: AFS EFIS systems automatically cross-check your instruments for you. For aircraft where the desired ADAHRS placement would result in interference due to proximity to ferrous metal or power, an optional remote magnetometer is available.

Weight: 0.5 lb. (0.2 kg) for SV-ADAHRS-200/201, 0.46 lb. (0.21 kg) for SV-MAG-236

Power: 0.15A @12V DC

MODEL#	NOTES	PRICE
SV-ADAHRS-200	Primary	\$1430
SV-ADAHRS-201	Secondary / Backup	\$850
SV-MAG-236	Remote magnetometer (optional)	\$180

## Engine Monitoring Modules



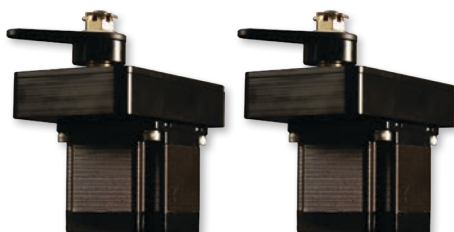
The EMS module receives signals from engine sensors for display on your EFIS. Order the SV-EMS-220 for most engines, SV-EMS-221 for the Rotax 912 iS, 915 iS, TP100, and UL Power. Engine sensor/harness packages for Lycoming/Continental/Jabiru/Rotax engines sold separately. Sensors/harnesses available a-la-carte for other engines.

Weight: 0.63 lb. (0.29 kg)

Power: 0.11A @12V DC

MODEL#	NOTES	PRICE
SV-EMS-220	For Lycoming, Continental and other traditional aircraft engines	\$690
SV-EMS-221	For Rotax 912 iS, 915 iS, TP100, and UL Power	\$690
Probe + Harness packages		\$325 - \$1275

## Autopilot Servos



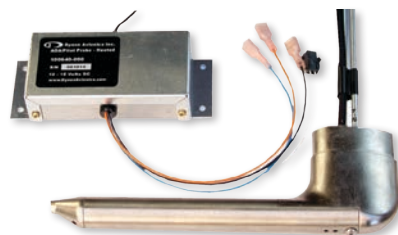
Just add servos to your system to add a fully IFR-capable autopilot. Mounting kits are available for various aircraft. The SV-AP-PANEL adds dedicated autopilot controls. It also features a digital, dual-axis trim controller with proportional speed control and autopilot auto-trim.

Weight: 2 lb. (0.9 kg) for SV32, 3 lb. (1.4 kg) for SV42, 4 lb. (1.8 kg) for SV52

Power: 1.3A / 2A / 2.8A @12V DC (at 100% torque)

MODEL#	NOTES	PRICE
SV32/42/52	Autopilot Servos	\$850 each
Various	Servo Mounting Brackets Kits	\$35--\$110

## AOA / Pitot Probes



The rest of General Aviation is starting to see the value of AOA as a major safety-enhancing device. Meanwhile, it's been available for all AFS EFIS systems for over a decade. It provides progressive audible approach-to-stall alert.

Weight: 0.35 lb. (0.18 kg) for 100141-000, 0.72 lb. (0.33 kg) for the 100667-000 with controller

Power: 10A @12V DC (at Maximum Heat)

MODEL#	NOTES	PRICE
100141-000	AOA/Pitot Probe, Unheated (Underwing)	\$245
100667-000	AOA/Pitot Probe, Heated w/controller (Underwing)	\$535
100532-000	AOA/Pitot Probe, Unheated (Boom Mount)	\$245

## Backup Batteries



An AF-BAT-3AH is designed to backup a single AF-5000 series screen. The AF-BAT-6AH will backup two screens. They each provide an hour of backup power for their supported configuration.

Weight: 0.8 lb. (0.4 kg) - SV-BAT-320

Power: 1.0A @12V DC (while charging)

MODEL#	NOTES	PRICE
AF-BAT-3AH	3 Amp Hour (AFS-5000 series only)	\$250
AF-BAT-6AH	6 Amp Hour (AFS-5000 series only)	\$425

# COMPONENTS

## Mode-S Transponders with ADS-B Out



Lightweight TSO'd Mode-S Transponder with TIS traffic reception (US only) and 1090ES ADS-B Out. US customers should choose the SV-XPNDR-261 for 2020 ADS-B mandate compliance (requires SV-GPS-2020 or other suitable position source).

Weight: 0.77 lb. (0.35 kg)  
Power: 0.4A @12V DC

MODEL#	NOTES	PRICE
SV-XPNDR-261	Class 1, FAA 2020 ADS-B Out	\$2390

## Traffic/Weather



The dual band SV-ADSB-472 receives ADS-B traffic via 978 MHz (UAT) and 1090 MHz, and also receives NEXRAD, METARS, TAFS, and other weather information. Unlike portable ADS-B receivers, you get FULL ADS-B and radar traffic when you pair this with our SV-XPNDR-261 and SV-GPS-2020.

Weight: 0.3 lb. (0.12 kg)  
Power: 0.05A @12V DC

MODEL#	NOTES	PRICE
SV-ADSB-472		\$845
AF-XM	XM weather and XM radio for AF-5000/6000 series systems only.	\$995

## GPS Receiver Module



WAAS-enabled, high-sensitivity GPS receiver/antenna. Provides multiple updates per second for superior mapping and synthetic vision. This module is weatherproof for external mounting.

Weight: 0.44 lb. (0.2 kg) for SV-GPS-250, 0.47 lb. (0.21 kg) for SV-GPS-2020  
Power: 0.1A @12V DC

MODEL#	NOTES	PRICE
SV-GPS-2020	US ADS-B Out 2020 compliant when paired with an SV-XPNDR-261 transponder.	\$890
SV-GPS-250	Not recommended for use in US when equipping for 2020 ADS-B Out compliance.	\$249

## ARINC 429



Use this interface module for third-party certified IFR navigators like the Avidyne IFD440/540.

Weight: 0.4 lb. (0.18 kg)  
Power: 0.1A @12V DC

MODEL#	NOTES	PRICE
SV-ARINC-429	ARINC 429 capability is built in to the Advanced Control Module (ACM). For systems that include an ACM, a separate SV-ARINC-429 module is not needed.	\$475

## Wi-Fi Adapter

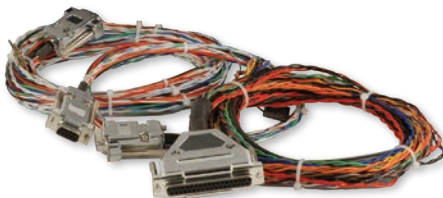


Connect AF-5000/6000 series displays to your mobile devices via the Wi-Fi Adapter, and use apps to flight plan from home and transfer once you're at the aircraft. Compatible with ForeFlight Mobile, PocketFMS EasyVFR, SkyDemon, Ozrunways, and FltPlan Go. Only one adapter per aircraft is used on AF-5000 series systems.

Weight: 0.006 lb. (0.003 kg)  
Power: 0.1A @12V DC

MODEL#	NOTES	PRICE
104571-000		\$40

### Harnesses/Network Cables



Prefabricated cables interconnect SV Network components to make sure your installation goes as smoothly as possible. These connect displays, ADAHRS, EMS, ARINC, COM radio, and Knob & AP control panels. Displays also have their own color-coded harnesses available, as do EMS sensor kits.

MODEL#	NOTES	PRICE
SV-NET-XXX		\$50-149
SV-ETHERNET-3CC	For multiple displays	\$30

### Video Input Adapter



Display video from any s-video or composite source.

Weight: 0.14 lb. (0.065 kg)

Power: 0.15A @12V DC

MODEL#	NOTES	PRICE
74141	Compatible with AF-5000 series only. Not compatible with earlier AFS EFIS systems.	\$55

### 5-Port Network Hub



Join up to 5 SV Network Cables together, eliminating complicated splicing, with this Network Hub.

Weight: 3.2 oz (0.2 lbs)

MODEL#	NOTES	PRICE
SV-NET-HUB		\$65

### Builder Support Products



Advanced and Dynon now manufacture a range of Builder Support Products and accessories to help pilots get from "first dream to first flight" as quickly as possible. Examples include Autopilot Level/Disconnect/Yaw Damper/Ident Panel Buttons, FastTrack Mounting Kits for stacking ADAHRS/EMS/ARINC modules, AOA/Pitot/Static Installation Kit, Panel Module Faceplate Blank, Transponder and ADS-B Antennas, and harnesses for Intercom, Transponder, and ADS-B.



# SYSTEM WORKSHEET

Description	List Price	AF 5000 SERIES		Yours	Model Numbers
		AFS VFR	AFS IFR		
Primary Flight Display (PFD) and Navigation					
12.1" AF-5800 Display	\$5200				AF-5800T
12.1" AF-5700 Display	\$4800				AF-5700T
10.4" AF-5600 Display	\$4490	\$4490	\$4490		AF-5600T
8.4" AF-5500 Display	\$4000		\$4000		AF-5500T
8.4" AF-5400 Display	\$4495				AF-5400T
Primary Wiring Harness - AFS	\$100	\$100	\$200		53600R3
SV Network Expansion Harness - AFS (For 3 Displays Only)	\$50				53625
ADAHRS - Primary	\$1430	\$1430	\$1430		SV-ADAHRS-200
ADAHRS - Second for Redundancy	\$850		\$850		SV-ADAHRS-201
Remote Magnetometer (optional)	\$180				SV-MAG-236
GPS 5Hz Receiver/Antenna	\$249 *		\$249 *		SV-GPS-250
GPS Navigation Mapping Software (now included with display)	\$0	\$0	\$0		SV-MAP-270
ARINC-429 Interface Module (for IFR GPS interface)	\$475		\$475		SV-ARINC-429
AF Backup Battery: 3 Amp hr. AF Backup Battery: 6 Amp hr.	\$230 \$395	\$230	\$395		AF-BAT-3AH AF-BAT-6AH
Knob Control Panel (Vertical or Horizontal available)	\$325				SV-KNOB-PANEL (V/H)
Video Input Adapter	\$55				74141
Wi-Fi Adapter	\$40	\$40	\$40		102405-000
Ethernet Cable – 3’ (multiple displays only)	\$30		\$30		SV-ETHERNET-3CC
Network Cables: 6" / 8" / 10" / 1' / 1.5' / 2' / 3' / 6' / 10' / 15' / 20' / 25' / 30'	\$50/50/50/55/65 \$70/70/80/90/95 \$105/130/149	\$65, \$90	\$65, \$65, \$90		SV-NET-XXX
Network Splitter (for installing two ADAHRS)	\$115		\$110		SV-NET-SPL
Network 5 Port Hub (for installing more than two modules)	\$65				SV-NET-HUB
Configuration Sub-Totals:		\$6,354	\$12,338		

<b>AOA/Pitot Probes</b>					
Pitot Probe, Unheated - underwing	\$245	\$245			100141-000
Pitot Probe, Heated, w/controller - underwing	\$535		\$535		100667-000
Pitot Probe, Unheated - boom mount	\$245				100532-000
<b>Configuration Sub-Totals:</b>		<b>\$245</b>	<b>\$535</b>		

## NOTES

---

---

---

---

---

---

---

---

Description	List Price	AF 5000 SERIES		Yours	Model Numbers
		AFS VFR	AFS IFR		
Engine Monitoring					
Standard Engine Monitoring Module / Module for Rotax 912 iS, 915 iS, TP100, and UL Power	\$690	\$690	\$690		SV-EMS-220 / 221
3' Network Cable (both end connectors)	\$70	\$70	\$70		SV-NET-3CC
Lyc/Cont/Superior, 4-cyl, Carbureted / Fuel Injected	\$1125 / \$1080	\$1080	\$1080		EMSKIT-L4C / L4F
Lyc/Cont/Superior, 6-cyl, Carbureted / Fuel Injected	\$1320 / \$1275				EMSKIT-L6C / L6F
Rotax 912 / Rotax 912 iS	\$590 / \$330				EMSKIT-RTX / RTX iS
Jabiru 2200 / 3300	\$905 / \$1070				EMSKIT-J22 / J33
Fuel Flow Transducer	\$265	\$265	\$265		100403-003
Configuration Sub-Totals:		\$2,105	\$2,105		

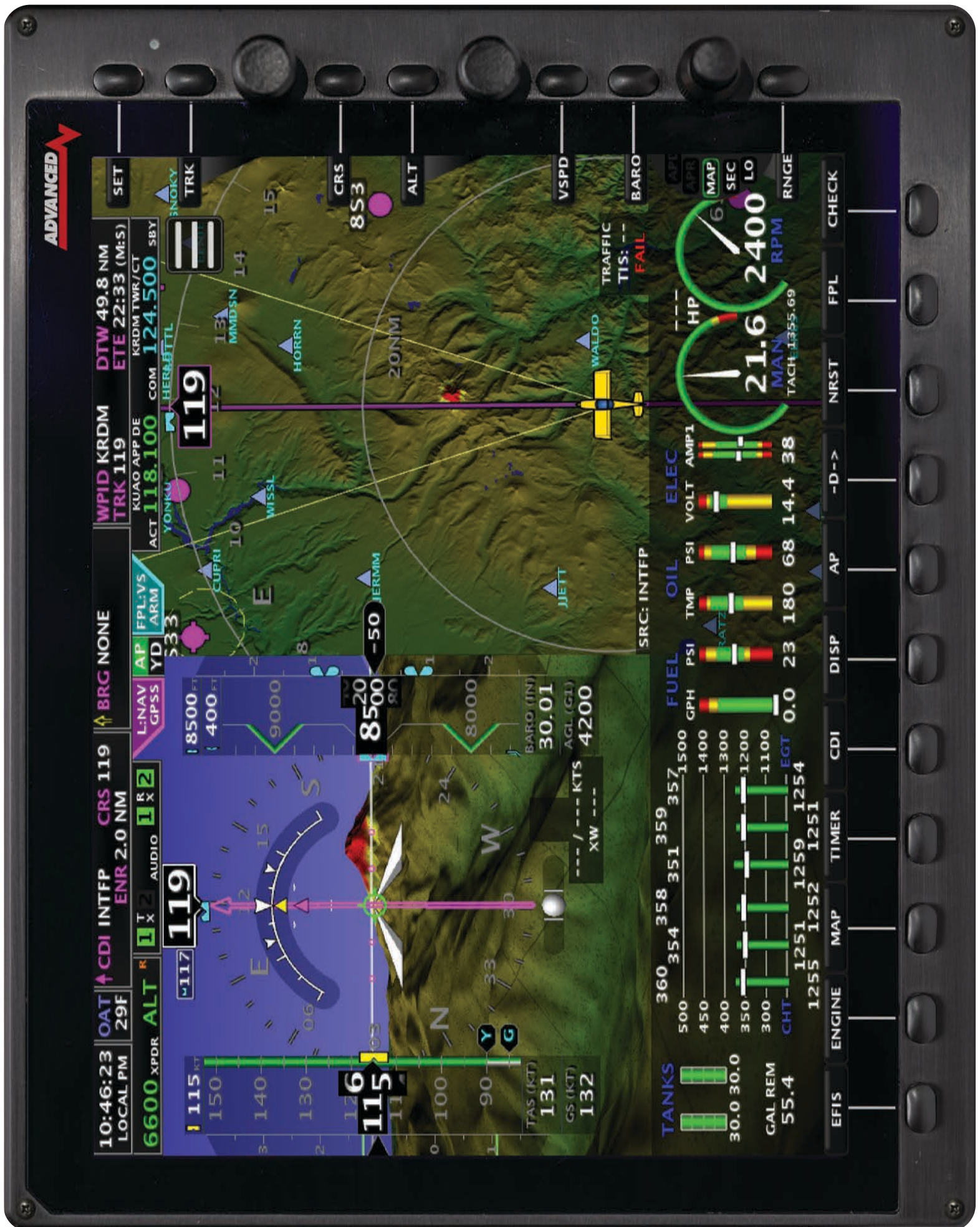
<b>Autopilot</b>					
SV32, SV42, SV52 Servo, Roll and/or Pitch, Regular or Capstan	\$850	\$1700	\$1700		Various
Autopilot Control Panel (Vertical or Horizontal available)	\$645		\$645		SV-AP-PANEL (V/H)
ACM to SkyView autopilot servos harness	\$170	\$170	\$170		57475
Network 5 Port Hub (for installing more than two modules)	\$65	\$65	\$65		SV-NET-HUB
Network Cable – with both end connectors, 1.5' or 3'	\$65 or \$75		\$65		SV-NET-1.5CC
Servo Mounting Brackets Kits - Various	\$95-110	\$190	\$190		Various
Generic Servo Connection Kit	\$30				101020-000
<b>Configuration Sub-Totals:</b>		<b>\$2,125</b>	<b>\$2,835</b>		

<b>Transponders, ADS-B In/Out, Traffic and Weather</b>					
Class 1, Mode-S, FAA 2020 ADS-B Out compliant	\$2390	\$2390	\$2390		SV-XPNDR-261
High Integrity GPS for 2020 - ADS-B Out Compliant	\$890	\$890			SV-GPS-2020
ADS-B Dual Band Traffic and Weather	\$845	\$845	\$845		SV-ADSB-472
XM Weather + Radio	\$995				AF-XM
<b>Configuration Sub-Totals:</b>		<b>\$4,125</b>	<b>\$3,235</b>		

<b>Radios, Intercom and Audio</b>					
VHF COM Radio, 25 kHz (Vertical or Horizontal available)	\$1375	\$1375	\$1375		SV-COM-X25 (V/H)
VHF COM Radio, 8.33 kHz (TSO'd transceiver) (Vertical or Horizontal available)	\$2330				SV-COM-X83 (V/H)
Network Cable – with both end connectors, 1.5' or 3'	\$65 or \$70	\$65	\$65		SV-NET-3CC
2-Place Stereo Intercom (Incl. Vertical & Horizontal faceplates)	\$295	\$295			SV-INTERCOM-2S
Third-Party Audio Panel - Remote/Panel-Mounted	Varies		Varies		AF-PDA360EX-R
<b>Configuration Sub-Totals:</b>		<b>\$1,735</b>	<b>\$2,935</b>		

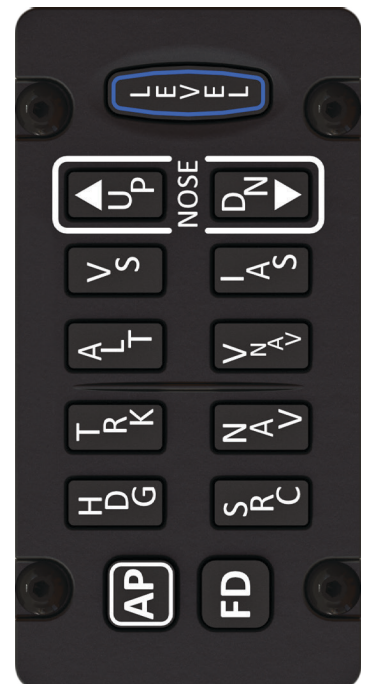
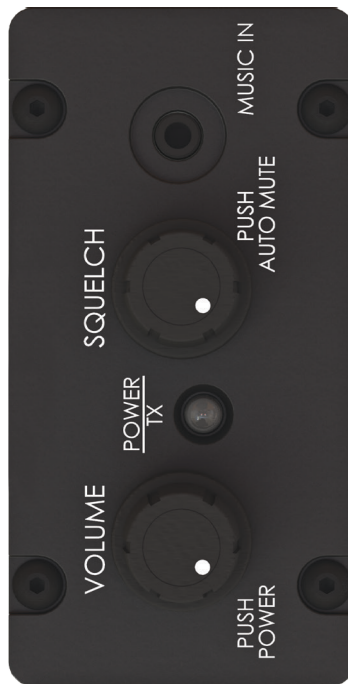
\* Required if not using SV-GPS-2020

Additional third party products that may be needed: IFR-Certified GPS, Nav Radio, COM Radio Antenna.

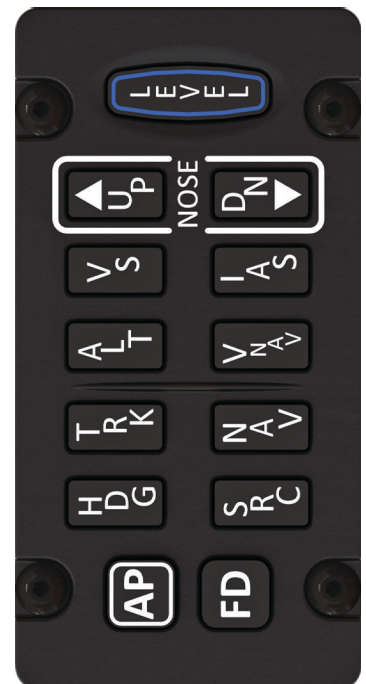
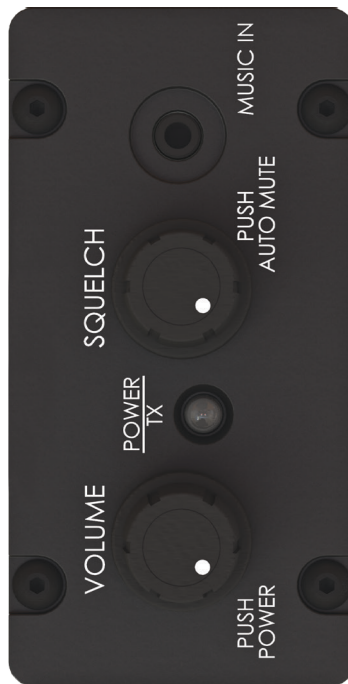


Actual size AF-5600/6600 10.4" Display – Dimensions: 8.15"H x 10.25"W





Actual Size Control Panels  
For planning use only. Do not use as a panel-cutting template.



Actual Size Control Panels  
For planning use only. Do not use as a panel-cutting template.





Actual size AF-5500 8.4" Display – Dimensions: 7.125"H x 9.125"W

For planning use only. Do not use as a panel-cutting template.





A Dynon Company

**ADVANCEDFLIGHTSYSTEMS.COM**

320 S Redwood St, Canby, OR 97013

(503) 263-0037